

## Product datasheet for TA346904

### HP1 gamma (CBX3) Mouse Monoclonal Antibody [Clone ID: 5G10-F7-A12]

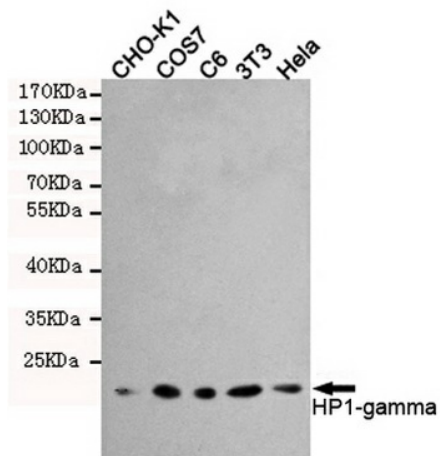
#### Product data:

Product Type:	Primary Antibodies
Clone Name:	5G10-F7-A12
Applications:	IF, IHC, IP, WB
Recommend Dilution:	WB: 1:1000, IF: 1:200
Reactivity:	Hamster, Human, Monkey, Mouse, Rat
Host:	Mouse
Isotype:	IgG1
Clonality:	Monoclonal
Immunogen:	The immunogen for CBX3 antibody: purified recombinant human HP1-gamma protein fragments expressed in E.coli.
Formulation:	Purified mouse monoclonal antibody in PBS(pH 7.4) containing with 0.02% sodium azide and 50% glycerol.
Purification:	Affinity purified
Predicted Protein Size:	22 kDa
Gene Name:	chromobox 3
Database Link:	<a href="#">NP_009207 Entrez Gene 12417 Mouse</a> <a href="#">Entrez Gene 297093 Rat</a> <a href="#">Entrez Gene 11335 Human</a>
Background:	At the nuclear envelope, the nuclear lamina and heterochromatin are adjacent to the inner nuclear membrane. The protein encoded by this gene binds DNA and is a component of heterochromatin. This protein also can bind lamin B receptor, an integral membrane protein found in the inner nuclear membrane. The dual binding functions of the encoded protein may explain the association of heterochromatin with the inner nuclear membrane. This protein binds histone H3 tails methylated at Lys-9 sites. This protein is also recruited to sites of ultraviolet-induced DNA damage and double-strand breaks. Two transcript variants encoding the same protein but differing in the 5' UTR, have been found for this gene. [provided by RefSeq, Mar 2011]
Synonyms:	HECH; HP1-GAMMA; HP1Hs-gamma
Protein Families:	Druggable Genome, Transcription Factors

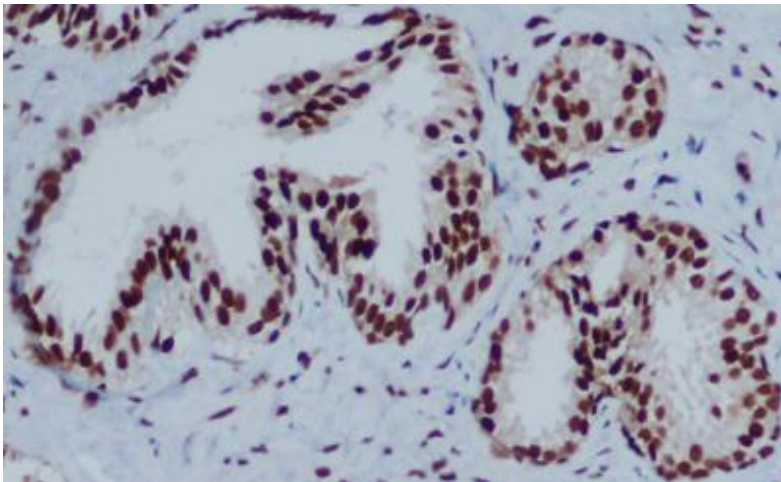


[View online »](#)

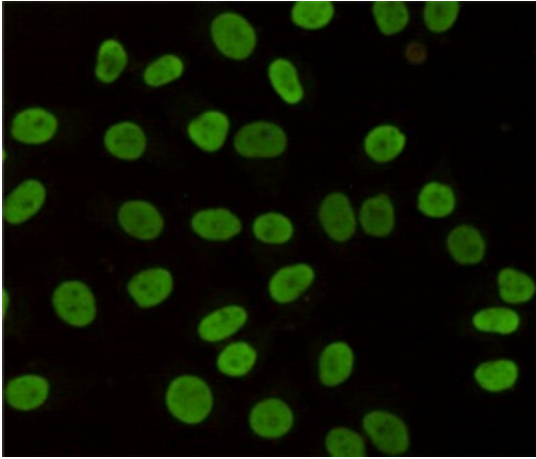
## Product images:



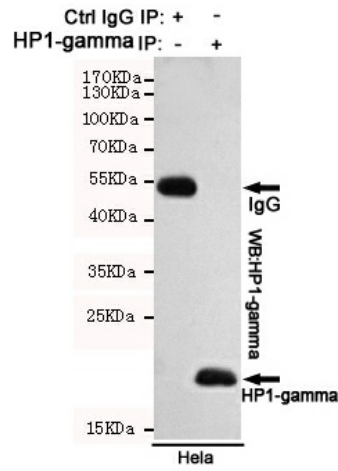
Western blot detection of HP1-gamma in HeLa, 3T3, C6, COS7 and CHO-K1 cell lysates using HP1-gamma mouse mAb (1:1000 diluted). Predicted band size: 22KDa. Observed band size: 22KDa.



Immunohistochemical analysis of paraffin-embedded Prostate Cancer using HP1-gamma mouse mAb (1/200 dilution). Antigen retrieval was performed by pressure cooking in citrate buffer (pH 6.0).



Immunocytochemistry staining of HeLa cells fixed with 4% Paraformaldehyde and using anti-HP1-gamma mouse mAb (dilution 1:200).



Immunoprecipitation analysis of HeLa cell lysates using HP1-gamma mouse mAb.